

2017 Annual Report

Stronger than ever

Since 1888, Visiting Nurse has provided compassionate service to our community. Visiting Nurse is a nonprofit organization that exists to support patients and their families during one of life's most challenging times. Visiting Nurse provides care for serious illness and end-of-life programs and services, including hospice and palliative care and grief support to any adult in the community who has experienced a loss.

OUR PROGRAMS & SERVICES



Hospice

Hospice care is a special approach to caring for people with an incurable illness. Our goal is to foster the optimum quality of life through physical, spiritual and emotional support. Hospice care is available in the home, independent/assisted living community, a nursing facility or in our 14-bed Hospice Home.



Palliative

Palliative care is designed for home-bound patients with a serious illness who may be seeking curative treatment. Our team provides support and assistance to manage health care needs in the home, area nursing facilities or by appointment at our outpatient clinic. We help patients and their families and/or caregivers learn about symptom control and pain management.



Grief Support

The Peggy F. Murphy Community Grief Center offers support to any adult in the community who has experienced the loss of a loved one. Individual counselling and loss-specific support groups are available at the Center and located throughout the greater Fort Wayne area.



visiting nurse

2017 Patient Data

Palliative Care

Number of Patients

278



INCREASE FROM 2016

Hospice Home, our In-Patient Facility cared for



INDIVIDUALS



2,500+
daylilies

planted in beds around our facility

21 NUMBER OF nationalities represented by our patients

7+ NUMBER OF languages spoken by our patients

1,325

PATIENTS RECEIVED

Hospice Care

IN 2017

757
FEMALE

568
MALE

Volunteers

155

Volunteers

678

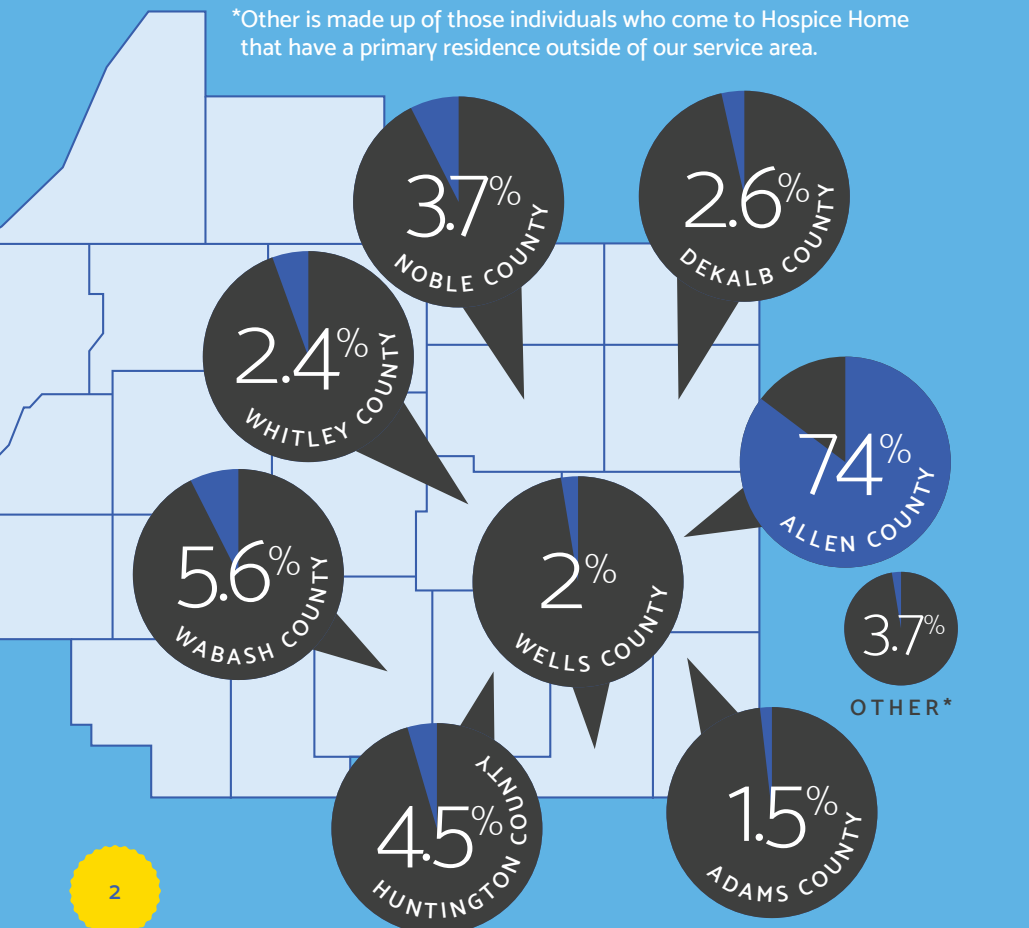
Direct Patient Care Visits

11,254

Volunteer Hours

Visiting Nurse Patients by County

*Other is made up of those individuals who come to Hospice Home that have a primary residence outside of our service area.



Bereavement Services

1,061+

PEOPLE FROM THE COMMUNITY attended presentations on grief

1,700

PEOPLE ATTENDED support group meetings

1,530

PEOPLE RECEIVED individual counseling services

21,258

Total Number of Individuals who Received Bereavement Services



The Peggy F. Murphy
Community Grief Center
For those who go on living
A service of Visiting Nurse



HOSPICE PATIENTS WERE

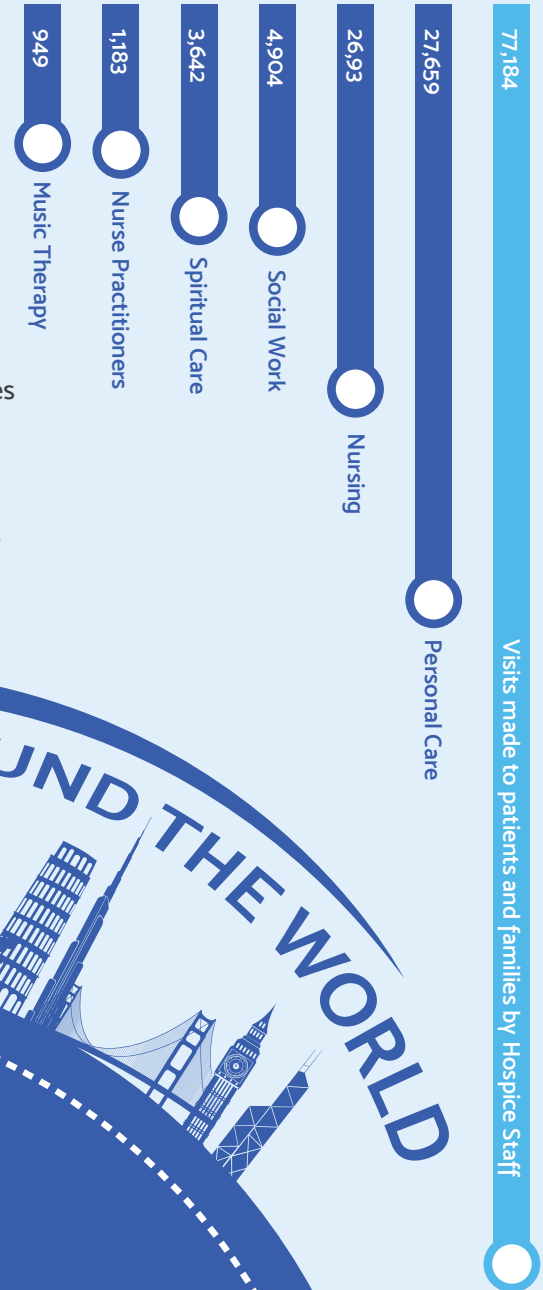
Veterans of the Armed Services

Visiting Nurse is a partner of the We Honor Veterans program with the National Hospice and Palliative Care Organization and the United States Department of Veteran Affairs. Our goal is to:

- Thank veterans for their service to our country
- Provide veterans with an opportunity to tell their stories
- Respect their service, their feelings and suggestions they may offer for increasing access to care for veterans
- Show appreciation for the families of veterans and support them as they support their loved one
- Link veterans and their families to services and benefits available to them

1 in 4 Dying Americans is a Veteran

Number of Patient Visits



AROUND THE WORLD

The circumference of the Earth is **24,901 miles.**

In 2017, our clinical staff traveled in excess of 511,000 miles to see our patients in their homes, nursing facilities and hospitals -

Equivalent to **20** Trips Around the World!

Financial Assistance

zero number of patients turned away due to inability to pay

\$238,000+ of financial assistance was utilized

2017 Annual Report

FINANCIAL INFORMATION

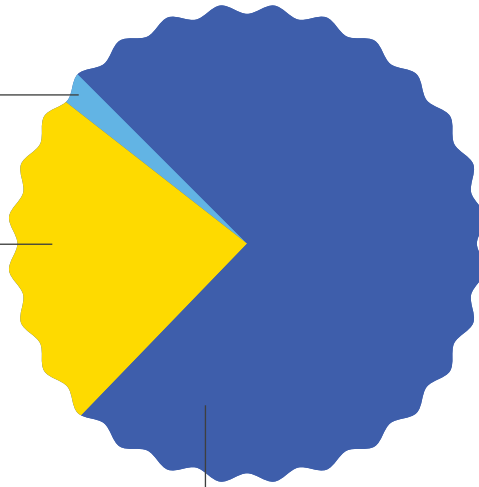
Expenses

Total: \$12,876,487

Fundraising 2%
\$247,327

Administrative Expenses 23%
\$3,043,850

Program Expenses 75%
\$9,585,310



Patient Services Revenue

Charity & Contractual Allowances - (\$1,033,268)

Total: \$12,983,976

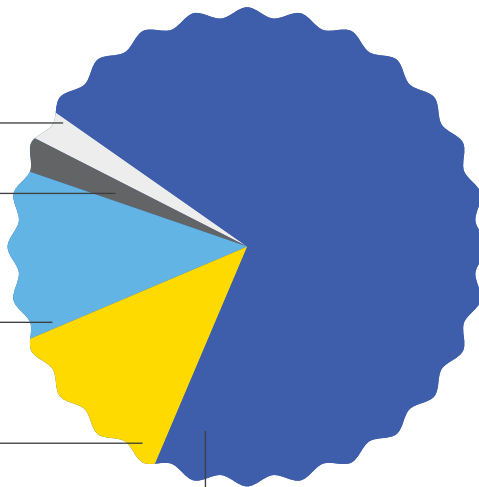
Medicaid 2%
\$273,250

Individual & Other 2%
\$343,175

Insurance 13%
\$1,780,057

Investment Gains,
Contributions & Other 11%
\$1,604,474

Medicare 72%
\$10,016,288



Assets

Cash	\$1,617,199
Investments.....	\$11,503,625
Accounts Receivable	\$1,863,190
Prepaid Expenses.....	\$88,083
Contributions Receivable.....	\$144,592
Property and Equipment	\$6,008,681
Total Assets.....	\$21,225,370

Liabilities

Accounts Payable.....	\$931,669
Accrued Expenses.....	\$455,359
Total Liabilities	\$1,387,028

Net Assets

Unrestricted	\$19,739,056
Temporarily Restricted	\$73,286
Permanently Restricted.....	\$26,000
Total Net Assets.....	\$19,838,342

Programs Services and Supplies Cost

Hospice at Home	\$5,573,983
Inpatient Facility	\$2,856,408
Palliative Care.....	\$1,154,919
Total	\$9,585,310

Our Mission: Visiting Nurse provides compassionate care to alleviate suffering and ensure quality of life for those affected by serious illness.